

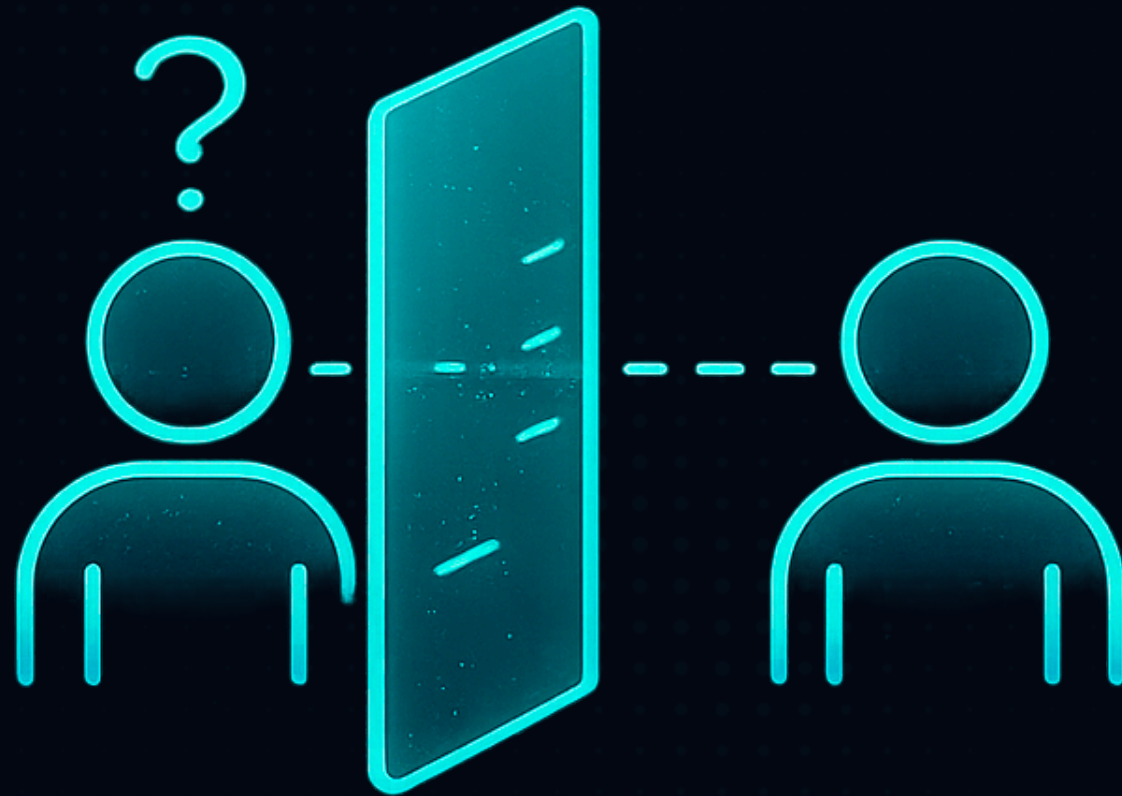
Deaf  
TalkAi

**BRINGING DOWN THE BARRIER OF SILENCE**

**VOICE, TEXT, AND IMAGES → SIGN LANGUAGE**

# PROBLEM

Communication for deaf users is fundamentally broken



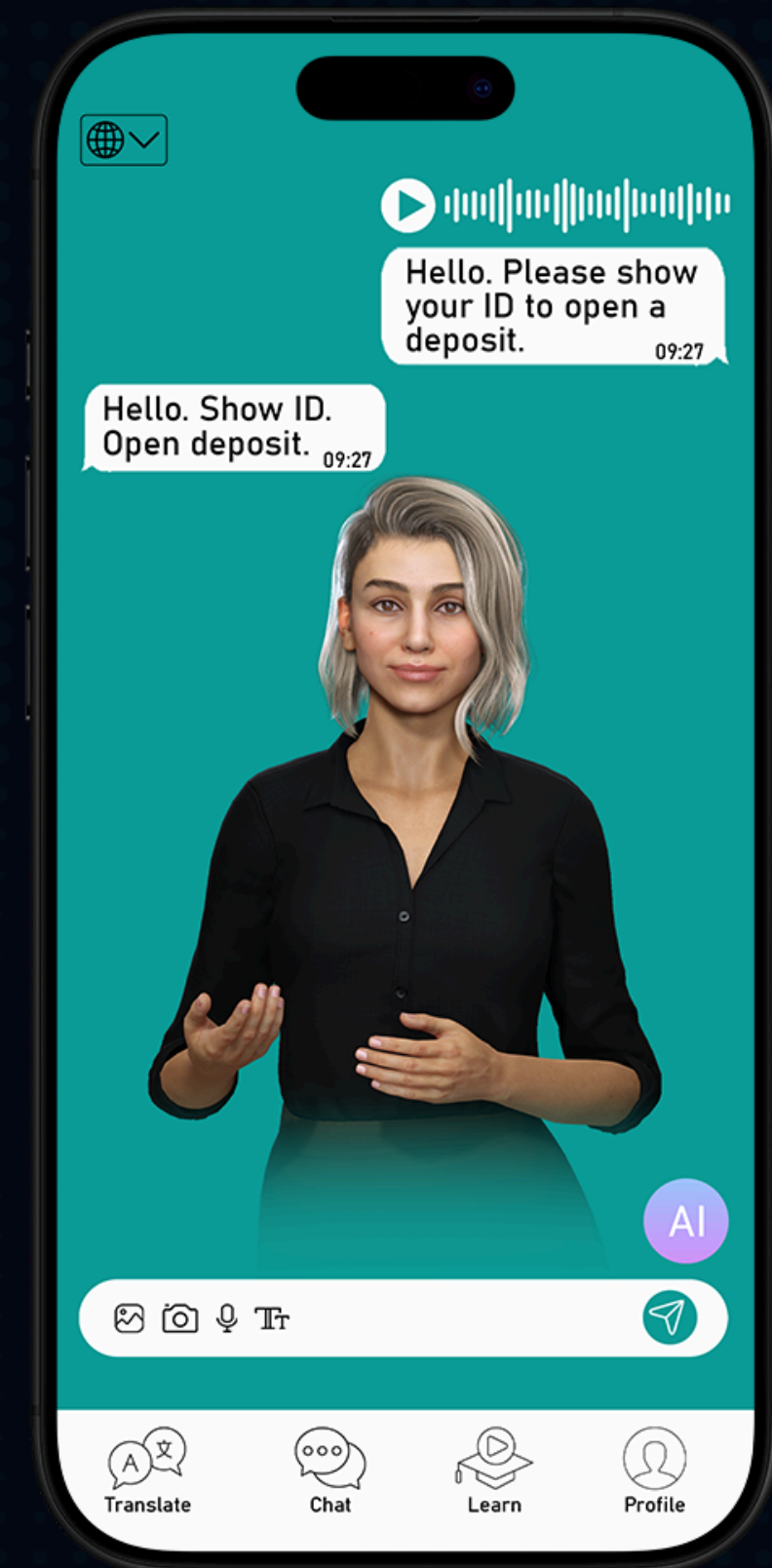
- 70M+ people lack real-time communication
- Solutions rely on human interpreters and don't scale
- Digital platforms are not adapted for sign language
- Communication remains slow, fragmented, and inaccessible

**ACCESSIBILITY IS NOT A SYSTEM — IT'S A WORKAROUND**

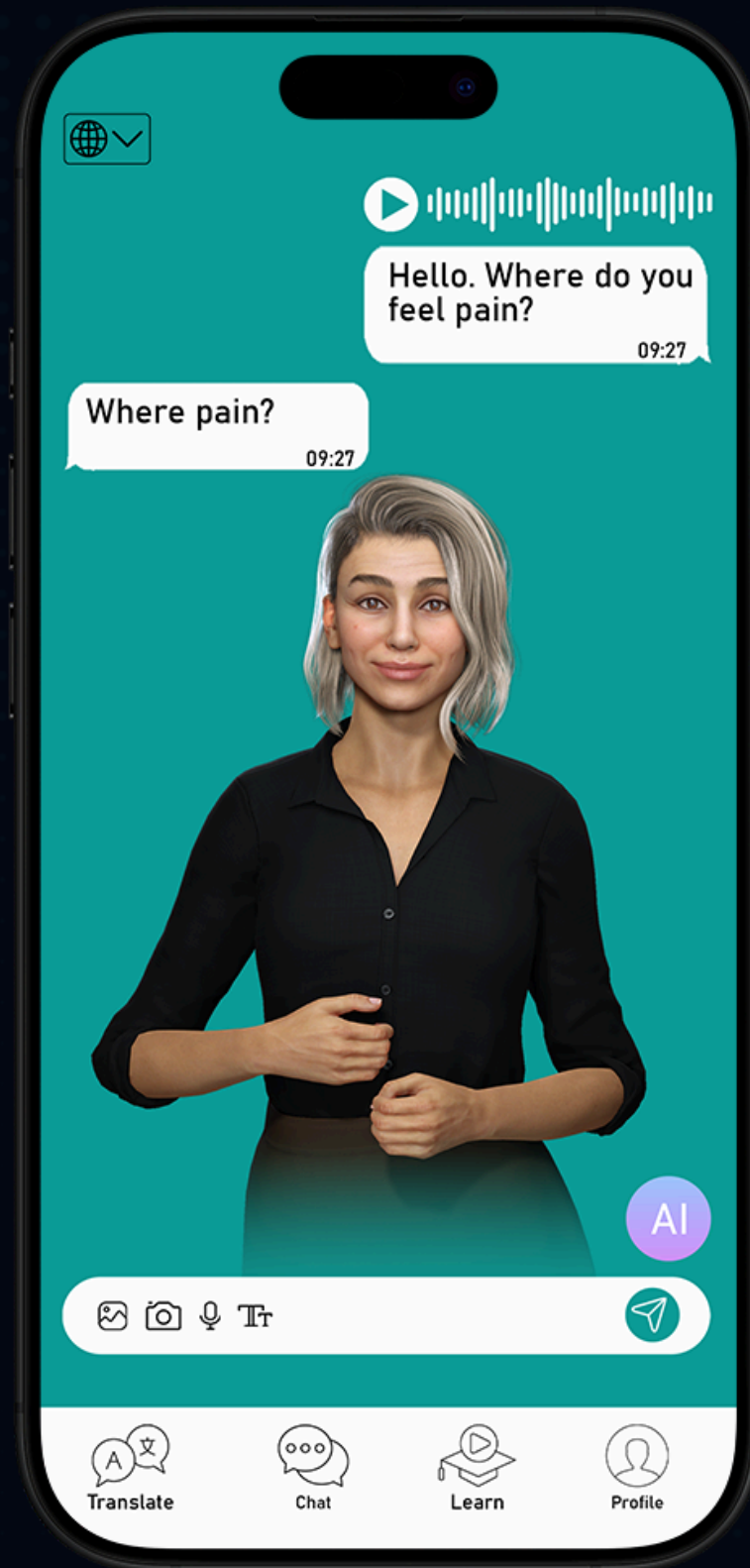
## Real-time AI communication for sign language

- Translates speech, text, and images into sign language
- Enables two-way communication
- Works across mobile and web

A new interface for human communication



No interpreters. Fully  
scalable.



Input → AI → Avatar → Output

AI translation system powered by **3D avatar**

- **Speech** → sign language translation
- **Text & OCR** → gesture output
- AI-assisted dialogue (in development)
- Reverse translation (**gesture → text**) (in progress)
- **Realistic avatar** output (video → 3D in development)

A complete communication system, **not just translation**

# MARKET

Large underserved market with global scalability

- 70M+ deaf and hard-of-hearing users globally
- Initial focus: ASL, TİD, RSL
- ~10–15M reachable users

## Scalable architecture

- Expansion to 35+ languages
- Cross-border communication demand

**\$10B+ TAM**

• ASL (USA)

TİD • Turkey

RSL • CIS countries



# ROADMAP

## June 2026 — Initial Release

Mobile + Web launch  
3 languages: EN / TR / RU  
Core translation system

## 2026 — Core Development

Gesture dataset expansion  
AI model improvement  
Early product features

## 2027 — Media Integration

Video translation via avatar  
Media & streaming partnerships

## 2026–2027 — AI Scaling

Reverse translation (in progress)  
Infrastructure scaling  
Pilot B2B / B2G integrations

## 2027+ — Global Expansion

New languages & markets  
Real-time communication scenarios  
Global AI communication layer

FROM MVP TO GLOBAL AI COMMUNICATION INFRASTRUCTURE



## Expansion

- **B2G** & enterprise integrations
- **API** access
- **SaaS** deployment

## Freemium → Subscription

- First 10 requests **free**
- **\$15/month** subscription

Hybrid model: B2C + B2B + infrastructure

## Revenue potential

- 100K users → **\$1.5M/month**
- + **B2G** contracts

# BUSINESS MODEL

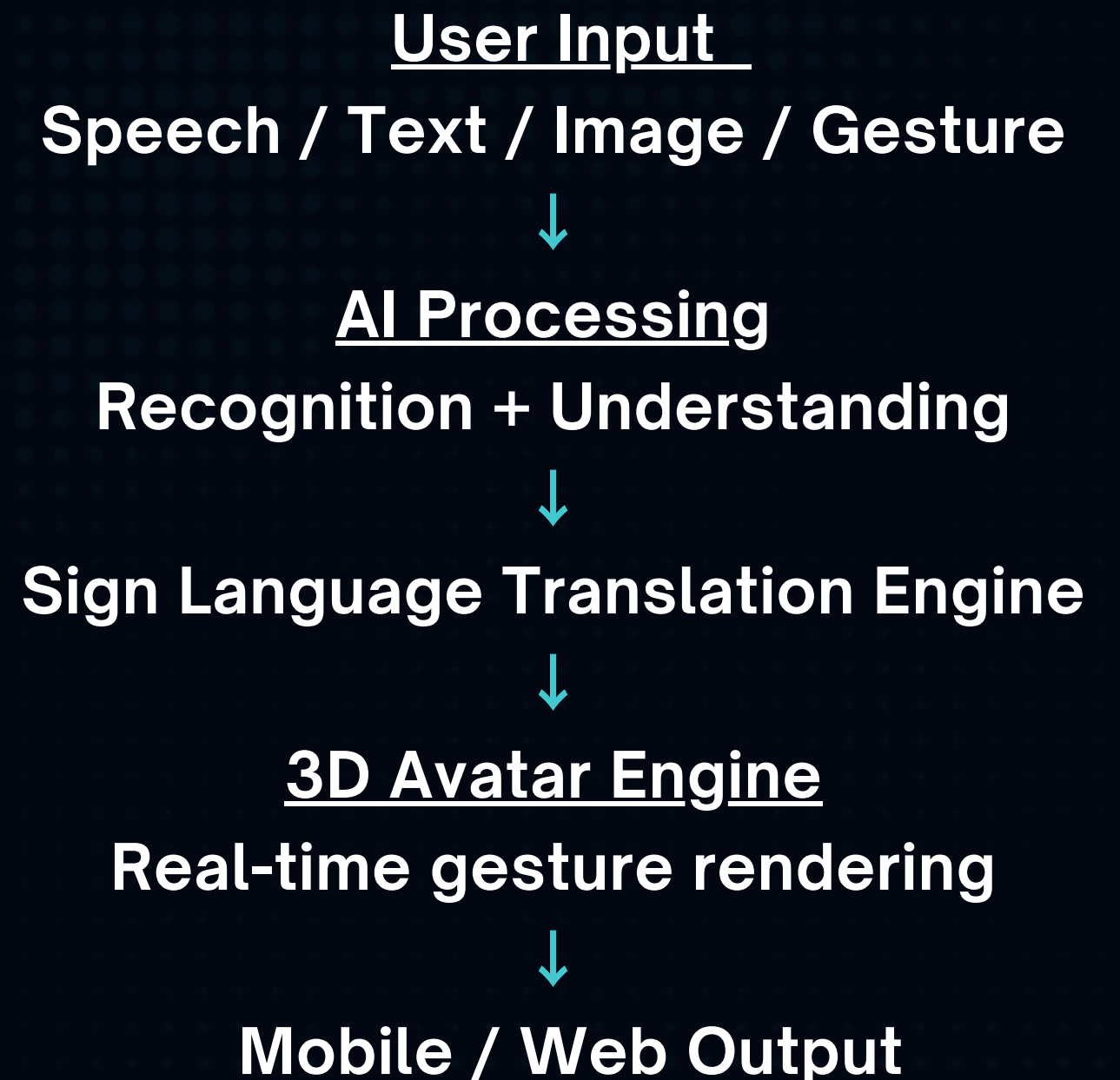


Full-cycle AI system for real-time sign language communication

Unified AI + 3D architecture

- AI models (LLM + NLP + Computer Vision)
- Motion capture (mocap pipeline)
- Proprietary gesture dataset (3D + video assets)
- 3D Avatar Animation Engine
- Scalable cloud infrastructure

# TECHNOLOGY



**BUILT AS A SINGLE INTEGRATED SYSTEM**



# WHY WE WIN

## DATA

Proprietary dataset

## TECH

AI + 3D + CV

## SCALE

Global infrastructure

## Defensible infrastructure, not a feature

- Full-cycle translation (forward + reverse communication)
- **Proprietary dataset** — core long-term moat
- Deep integration of AI + 3D + computer vision
- **High barrier to entry** (data, motion capture, training pipeline)

**Extremely difficult for competitors to replicate. Even harder to scale.**



# WHY NOW

THE PERFECT MOMENT TO ENTER THE MARKET

NO GLOBAL INFRASTRUCTURE EXISTS FOR SIGN LANGUAGE AI

## AI

Production-ready  
technology

## Accessibility

Becoming a global  
standard

## Market gap

No dominant  
player

THE MARKET IS OPEN — AND READY  
TO SCALE GLOBALLY



# FINANCIALS

Scalable unit economics

At scale

**2M users**

**\$1.5M MRR**

**\$18M ARR**

Monetization

- **100K** paid subscribers (~5% conversion)
- **\$15/month** subscription

Expansion revenue

- **B2G** contracts
- Institutional revenue

**STRONG SAAS + INFRASTRUCTURE UPSIDE**



# VISION

From translation to a new communication standard

- Sign language as a **native digital interface**
- **Real-time communication** across languages and countries
- **AI-powered interaction layer** across digital services

**DEAF AI BECOMES THE DEFAULT ACCESSIBILITY LAYER**





**FOCUSED, PRODUCT-DRIVEN EXECUTION**

**TEAM**



**Rustam Rustambaev**  
Founder & CEO



**Farida Rustambaeva**  
Sign Language Community  
& Partnerships Lead



**Mikhail Alekhin**  
AI / Full-stack Engineer

**TEAM BUILDING THE FUTURE OF COMMUNICATION**



LET'S BUILD THE FUTURE OF COMMUNICATION

**THANK  
YOU**

**info@deaftalkai.com  
+1 302 688 7067**

**www.deaftalkai.com**